

STREET-LITE (LED-2)

Stand-alone, self-powered solar lighting tower



When looking for a portable, easy to manage solar lighting tower, look no further than our Street-Lite (LED-2).

5.5M
MAST



ZERO
CO₂
EMISSIONS



ZERO
FUEL
COSTS



ZERO
NOISE



ZERO
ENGINE
MAINTENANCE
COSTS

Suitable for low level lighting applications only, such as **car parks, walkways, steps** or **stairs**.

Features

1 x 40W + 1 x 15W fully adjustable 360° swivel & tilt LED lighting head complete with full automatic PIR motion sensor

An MHM Dusk 'til Dawn Auto on/off sensor

5.5m vertical stainless steel manual mast

High efficiency & fully tiltable solar panel

Heavy duty, deep cycle battery

On/Off switch

Battery charge level indicator

Built in 230V mains charger c/w 13A plug & lead

Central lifting eye and front, side and rear fork pockets

Benefits

15W LED light on at all times at night & 40W LED light will automatically turn on and off when activity is near or far, saving power

Light will automatically turn on/off as per sunset and sunrise – *when in Auto mode only*

For quick, simple and easy set-up

Harvesting solar energy in all UK seasons and weather conditions

Ample power to support most low level site lighting applications all year round with no other power support or back up power required

Turn light off when in transport or storage

Quick, simple and easy visual check of the battery charge status on and off site

Have light fully charged and ready for hire at all times when stored inside depot, plugged in to mains power

For flexible and safe loading and off-loading



All pictures are for illustration purposes only, actual machines supplied may differ in appearance and specification. (25 May 2021)



Designed in the UK,
built in Italy

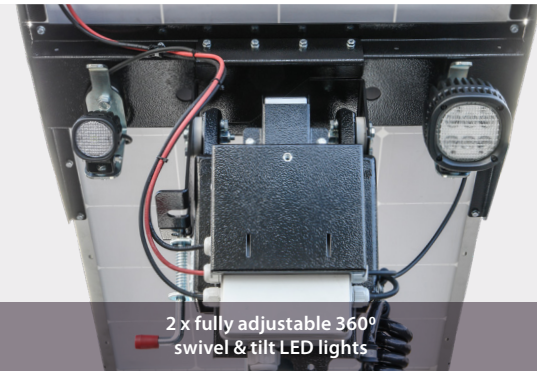


GROUP
The Preferred Supplier

STREET-LITE (LED-2)



Fully tiltable solar panel



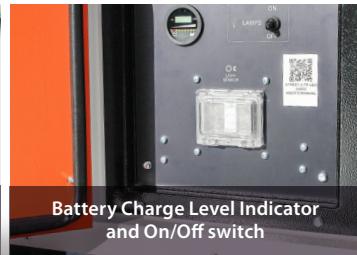
2 x fully adjustable 360° swivel & tilt LED lights



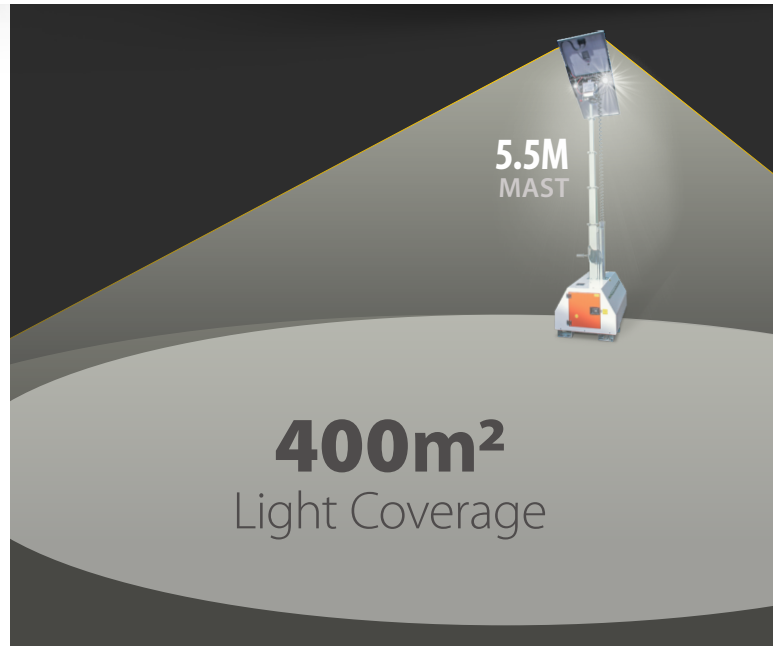
Fully automatic PIR motion sensor



Built in 230V 13A mains input charger

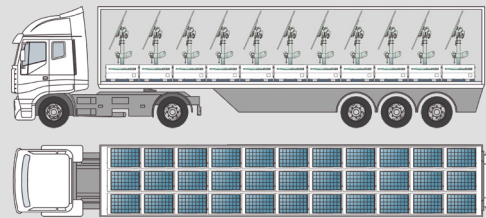


Battery Charge Level Indicator and On/Off switch



5.5M
MAST

400m²
Light Coverage



Standard
load delivery

33
per truck

Specification

Dimensions (Storage mode, mast down & solar panel flat – "horizontal")

Length: 1500 mm Width: 760 mm Height: 2100 mm

Dimensions (Operation mode, mast up & solar panel tilted)

Length: 1500 mm Width: 760 mm Height: 5500 mm Weight: 280 kg

Performance

Solar Panel	1 x 175W
Battery Runtime (1 x Full Charge)	
Max. Light (Bright – 2 x LED on)	13 Hours
Min. Light (Dim – 1 x LED on)	15 Hours
Mechanical Protection - IP	65
Batteries	AGM Sealed Lead Acid
Expected Battery Cycle	500
CO ₂ Output Per Hour 'All Lights On'	0kg

Lighting

Light Coverage	400m ²
Lighting Head	1 x 15W LED on at all times + 1 x 40W LED turns on when activated by PIR motion sensor
Max Mast Height	5.5m
Mast Type	Manual
Certified Wind Stability	110kmh / 70mph



The **zero CO₂ emissions** and **zero fuel usage** achieved by contractors when hiring **Street-Lite Lighting Towers** can be included in the Contractors Sustainability Policy, which will help them to win Government and Local Authority Contracts.

For more details call **MHM TODAY**
on **0808 168 9099**

Email sales@mhmplant.com or visit us at www.mhmplant.com



Designed in the UK,
built in Italy

