



Serving the **Hire Industry** and the **Hire Industry** only



**NEW**  
Equipment Sales

HVO Compatible  
Diesel Storage //

AdBlue Storage //

Water Storage //

Pressure Washer  
Bowlers //

**QUALITY RUGGED & RELIABLE TANKS & BOWSERS**

# FLUID STORAGE CATALOGUE





## Welcome to the MHM Group fluid storage catalogue.

The MHM Group have been supplying UK and Ireland rental businesses with safe fluid storage solutions machinery for many years.

Portable, stackable, site and road tow options are available, alongside an extensive line of pump kits.

MHM fluid storage products are **fully certified and compliant** with all current regulations. They have been designed and built exclusively for the rental markets, incorporating all the features and benefits that an end-user expects.

All MHM fluid storage solutions are delivered 'ready to work' and supported by **fully trained and experienced personnel**.

The MHM Group's manufacturing facility is based near Milan, Italy and has over 40 years' experience in producing a wide array of equipment for the global rental markets.

An extensive stock of fluid storage tanks are maintained in the UK ready for quick delivery.

**Need to know more? Then get in touch with us:**

**TEL: +44 (0)808 168 9099**

**EMAIL: [sales@mhmplant.com](mailto:sales@mhmplant.com)**

**FAX: +44 (0)1639 777001**

## Contents //

Fuel Storage		AdBlue Storage	
	Fuel Caddi -105 .....3		Fuel-SteelCube 450 .....3
	Fuel-SteelCube 950 .....3		Fuel-SteelCube 2000 .....4
	Fuel-SteelCube 3000 .....4		Fuel-Polycube 950 .....5
	Fuel-Polycube 2000 .....5		AdBlue PolyCube 950 .....6
			AdBlue PolyCube 2000 .....6
Water Storage			
	Water PolyCube 1000 .....7		Stackable Water Tank 1125 .....7
	Site-Tow Water Bowser 1125 .....8		Site-Tow Water Bowser 2000 .....8
	Road-Tow Water Bowser 1125 .....8		Road-Tow Water Bowser 2000-SA .....9
	Road-Tow Water Bowser 2000-TA .....9		Road-Tow Pressure Washer Bowser 1125 ..10
			Road-Tow Pressure Washer Bowser 2000 ..10

# Fuel Browsers/Tanks



When looking for a robust, reliable, good quality transportable fuel storage tank suitable for fuel usage on and off site & connectable to both generators and heaters, look no further than our MHM Fluid Storage range.

## Fuel Caddi-105

105 litre transportable & portable IBC fuel container



Optional extras

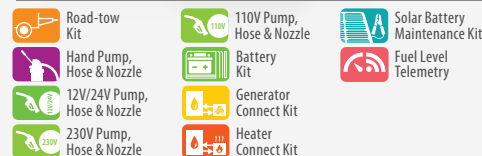


## Fuel-SteelCube 450

450L Transportable Fuel Storage Tank



Optional extras



## Fuel-SteelCube 950

950L Transportable Fuel Storage Tank



Optional extras



## Features

- 105, 450 and 950 litre capacities available
- Suitable to store either diesel, HVO (Hydrotreated Vegetable Oil) or a mixture of both fuels
- Fully bunded base (110%)
- Stackable design\*
- Lockable access/ storage hatch
- Flexible connectivity\*
- Fork pockets + lifting eyes
- Protective galvanised framework & durable powder coated paint finish\*/ Durable powder coated paint finish†
- Removable inner tank†
- Sized to transport across a truck bed & stackable for container handling\*
- Small & portable wheelie-bin style design complete with handle + 2 x wheels†

## Benefits

- Can be transported full of diesel
- Total flexibility in a modern environment
- To retain all spilt fluids
- Stack 2 high full or 3 empty for improved storage
- Storage available for various pump kits and generator or heater connection kit
- Able to supply up to 2 generators or heaters & refuel plant machinery at the same time
- Simple & easy manoeuvrability when full or empty
- Robust, long lasting & ready for work in any environment
- Easy access for maintenance & inspection
- Simple, effective & economical design to easily move via road transport & shipping
- Perfect for restricted access areas, such as doorways & lifts

\* Fuel-SteelCube 450 & 950 only † Fuel Caddi-105 only  
NOTE: Fuel-SteelCube 450 & 950 is pictured with 230V pump kit optional extra.

Model	Capacity (full)	Fluid	Design Approval	Bund Material (thickness)	Inner Tank (thickness)	Dimensions – tank only					Dimensions – with road-tow kit				
						L	W	H	Dry Weight (No Fuel)	Wet Weight (Fuel Full)	L	W	H	Weight (Without Fuel)	Weight (Full of Fuel)
Fuel Caddi-105	105 L	Diesel / HVO (HVO = BS EN 15940:2016 Only)	ADR IBC Type 31HA1	2.2mm	4.5mm (Polythene)	605	510	1000	57 kg	146 kg	N/A	N/A	N/A	N/A	N/A
Fuel-SteelCube 450	450 L	Diesel / HVO (HVO = BS EN 15940:2016 Only)	ADR IBC Type 31A	3mm	3mm	1230	1130	860	350 kg	733 kg	3150	1800	1440	640 kg	1023 kg
Fuel-SteelCube 950	950 L	Diesel / HVO (HVO = BS EN 15940:2016 Only)	ADR IBC Type 31A	3mm	3mm	1445	1190	1340	510 kg	1318 kg	3150	1800	1920	800 kg	1608 kg

Specification



# Fuel Browsers/Tanks

**MHM FLUID STORAGE**

When looking for a robust, reliable, good quality transportable fuel storage tank suitable for fuel usage on and off site & connectable to both generators and heaters, look no further than our MHM Fluid Storage range.

## Fuel-SteelCube 2000

2000L transportable fuel storage tank


**FULLY BUNDED**
**Road Tow Option Available**
**STACKABLE DESIGN**
**UK STANDARD APPROVED**
**HVO FUEL APPROVED**

### Optional extras



## Fuel-SteelCube 3000

3000L transportable fuel storage tank


**FULLY BUNDED**
**STACKABLE DESIGN**
**UK STANDARD APPROVED**
**HVO FUEL APPROVED**

### Optional extras



## Features

2000 and 3000 litre options available

Suitable to store either diesel, HVO (Hydrotreated Vegetable Oil) or a mixture of both fuels

Fully banded base (110%)

Stackable design

Lockable access/ storage hatch

Flexible connectivity

Fork pockets + lifting eyes

Protective galvanised framework & durable powder coated paint finish

Removable inner tank

Sized to transport across a truck bed & stackable for container handling

## Benefits

Can be transported full of diesel

Total flexibility in a modern environment

To retain all spilt fluids

Stack 2 high full or 3 empty for improved storage

Storage available for various pump kits and generator or heater connection kit

Able to supply up to 2 generators or heaters & refuel plant machinery at the same time

Simple & easy manoeuvrability when full or empty

Robust, long lasting & ready for work in any environment

Easy access for maintenance and inspection

Simple, effective & economical design to easily move via road transport & shipping

NOTE: Fuel-SteelCube 2000 & 3000 is pictured with 230V pump kit optional extra.

## Specification

Model	Capacity (full)	Fluid	Design Approval	Bund Material (thickness)	Inner Tank (thickness)	Dimensions – tank only					Dimensions – with road-tow kit				
						L	W	H	Dry Weight (No Fuel)	Wet Weight (Fuel Full)	L	W	H	Weight (Without Fuel)	Weight (Full of Fuel)
						(mm)					(mm)				
Fuel-SteelCube 2000	2000 L	Diesel / HVO (HVO = BS EN 15940:2016 Only)	ADR IBC type 31A	3mm	3mm	2560	1200	1340	776 kg	2476 kg	4200	1750	1900	1266 kg	2966 kg
Fuel-SteelCube 3000	3000 L	Diesel / HVO (HVO = BS EN 15940:2016 Only)	ADR IBC type 31A	3mm	3mm	1695	3484	2430	934 kg	3484 kg	N/A	N/A	N/A	N/A	N/A



All our fuel tanks are HVO Approved (BS EN 15940:2016 Standard Only)



All pictures are for illustration purposes only, actual machines supplied may differ in appearance and specification.

Tel 0808 1689099 Email [sales@mhmplant.com](mailto:sales@mhmplant.com)  
[www.mhmplant.com](http://www.mhmplant.com)

# Fuel Bowsters/Tanks



When looking for a robust, reliable, good quality transportable fuel storage tank suitable for fuel usage on and off site & connectable to both generators and heaters, look no further than our MHM Fluid Storage range.

## Fuel-Polycube 950

950L transportable fuel storage tank



Optional extras

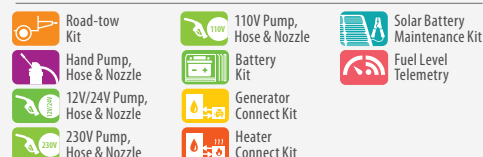


## Fuel-Polycube 2000

2000L transportable fuel storage tank



Optional extras



## Features

- 950 or 2000 litre capacity
- Suitable to store either diesel, HVO (Hydrotreated Vegetable Oil) or a mixture of both fuels
- Fully bunded base (110%)
- Stackable design
- Lockable access/ storage hatch
- Flexible connectivity
- 4 x fork pockets + 4 x lifting eyes
- Protective galvanised framework & durable corrosion-free polyethylene inner & outer tank
- Removable inner tank
- Sized to transport across a truck bed & stackable for container handling

## Benefits

- Can be safely transported full of diesel, under ADR regulations
- Total flexibility in a modern environment
- To retain all spilt fluids
- Stack 2 high full or 3 empty for improved storage
- Secure storage available for various pump kits and generator or heater connection kit
- Able to supply up to 2 generators or heaters & refuel plant machinery at the same time
- Simple & easy manoeuvrability when full or empty
- Robust, long lasting & ready for work in any environment
- Easy access for maintenance and inspection
- Simple, effective & economical design to easily move via road transport & shipping

Model	Capacity (full)	Fluid	Design Approval	Bund Material (thickness)	Inner Tank (thickness)	Dimensions – tank only					Dimensions – with road-tow kit				
						L	W	H	Dry Weight (No Fuel)	Wet Weight (Fuel Full)	L	W	H	Weight (Without Fuel)	Weight (Full of Fuel)
						(mm)			300 kg	1107 kg	(mm)			TBA	TBA
Fuel-Polycube 950	950 L	Diesel / HVO (HVO = BS EN 15940:2016 Only)	ADR IBC Type 31A	5mm	7mm	1215	1215	1410			TBA	TBA	TBA		
Fuel-Polycube 2000	2000 L	Diesel / HVO (HVO = BS EN 15940:2016 Only)	ADR IBC Type 31A	5mm	7mm	2500	1215	1430	580 kg	2300 kg	TBA	TBA	TBA	TBA	TBA

Specification

# Fluid Storage //

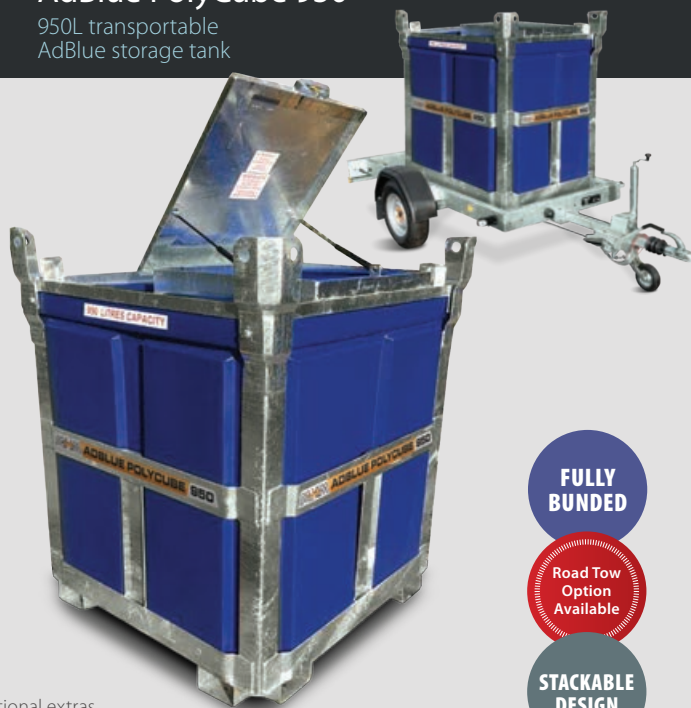
## AdBlue Storage



When looking for a robust, reliable, good quality transportable AdBlue storage tank suitable for AdBlue usage on and off site, look no further than our MHM Fluid Storage range.

### AdBlue PolyCube 950

950L transportable AdBlue storage tank



Optional extras



FULLY BUNDED

Road Tow Option Available

STACKABLE DESIGN



### AdBlue PolyCube 2000

2000L transportable AdBlue storage tank



Optional extras



FULLY BUNDED

Road Tow Option Available

STACKABLE DESIGN



## Features

950 and 2000 litre capacity

Fully bundled base (110%)

Stackable design

Lockable access/ storage hatch

4 x fork pockets + 4 x lifting eyes

Protective galvanised framework & durable corrosion free polyethylene inner and outer tank

Removable inner tank

Sized to transport across a truck bed & stackable for container handling

## Benefits

Can be safely transported full of AdBlue with enough storage for the average construction site application

To retain all spilt fluids

Stack 2 high full or 3 empty for improved storage

Secure storage available for various pump kits

Simple & easy manoeuvrability when full or empty

Robust, long lasting & ready for work in any environment

Easy access for maintenance and inspection

Simple, effective & economical design to easily move via road transport & shipping

## Specification

Model	Capacity (full)	Fluid	Design Approval	Bund Material (thickness)	Inner Tank (thickness)	Dimensions – tank only					Dimensions – with road-tow kit				
						L	W	H	Dry Weight (No Fuel)	Wet Weight (Fuel Full)	L	W	H	Weight (Without Fuel)	Weight (Full of Fuel)
						(mm)			(kg)	(kg)	(mm)			(kg)	(kg)
AdBlue PolyCube 950	950 L	AdBlue	UK Standard	5mm	7mm	1215	1215	1410	290	1240	TBA	TBA	TBA	TBA	TBA
AdBlue PolyCube 2000	2000 L	AdBlue	UK Standard	5mm	7mm	2500	1215	1430	558	2558	TBA	TBA	TBA	TBA	TBA

Sales leaflets containing full product specification available on request and can be found on our website.

Tel 0808 1689099 Email [sales@mhmplant.com](mailto:sales@mhmplant.com)  
[www.mhmplant.com](http://www.mhmplant.com)



All pictures are for illustration purposes only, actual machines supplied may differ in appearance and specification.



# Fluid Storage //

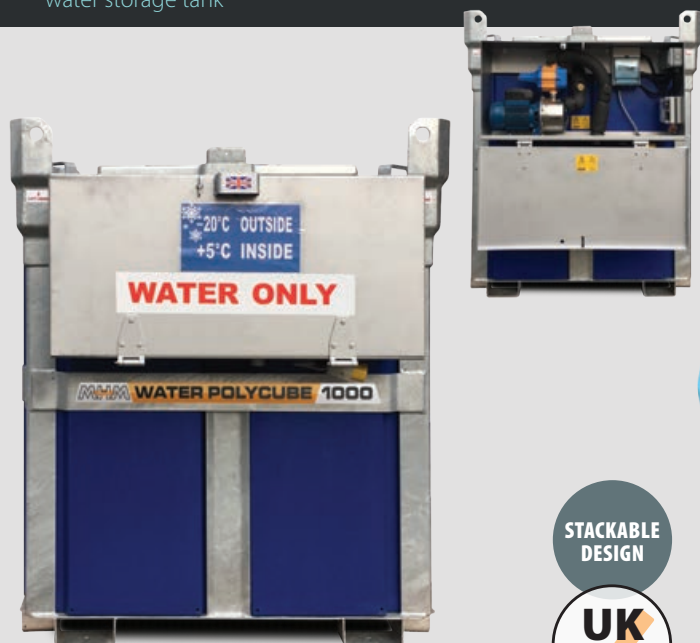
## Water Storage



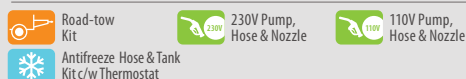
When looking for a robust, reliable, good quality transportable and stackable water storage tank suitable for general water usage on and off site, look no further than our MHM Fluid Storage range.

### Water PolyCube 1000

1000L (220 gallon) transportable water storage tank



Optional extras

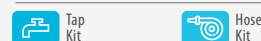


### Stackable Water Tank 1125

1125L (250 gallon) transportable and stackable water storage tank



Optional extras



## Features

1000 litre (220 gallon) and 1125 litre (250 gallon) capacity

Drinking water approved

Stackable design

Internal anti-surge baffle\*

Lockable access/ storage hatch

Flexible connectivity

4 x fork pockets + 4 x lifting eyes<sup>1</sup> / 2 x fork pockets + 4 x lifting eyes\*

Protective galvanised framework & durable corrosion free polyethylene inner and outer tank

Removable inner tank

Sized to transport across a truck bed & stackable for container handling<sup>1</sup>

## Benefits

Can be safely transported full of water and enough storage for most construction site applications

Suitable for both construction and event applications

Stack 2 high full or 3 empty for improved storage

Additional stability for transport

Secure storage available for various pump kits

Able to connect to multiple cabins or temporary building applications

Simple & easy manoeuvrability when full or empty

Robust, long lasting & ready for work in any environment

Easy access for maintenance and inspection

Simple, effective & economical design to easily move via road transport & shipping

\* Stackable Water Tank 1125 only  
<sup>1</sup>Water PolyCube 1000 only

Model	Capacity (full)	Fluid	Design Approval	Bund Material (thickness)	Inner Tank (thickness)	Dimensions – tank only					Dimensions – with road-tow kit				
						L	W	H	Dry Weight (No Fuel)	Wet Weight (Fuel Full)	L	W	H	Weight (Without Fuel)	Weight (Full of Fuel)
						(mm)			300 kg	1300 kg	(mm)			TBA	TBA
Water PolyCube 1000	1000 L (220 gallon)	Drinking Water Only	UK Standard	5mm	7mm	1215	1215	1430			TBA	TBA	TBA		
Stackable Water Tank 1125	1125 L (250 gallon)	Drinking Water Only	UK Standard	7mm	7mm	1830	1540	1525	180 kg	1305 kg	N/A	N/A	N/A	N/A	N/A

Specification



Tel 0808 1689099 Email [sales@mhmplant.com](mailto:sales@mhmplant.com)  
[www.mhmplant.com](http://www.mhmplant.com)

All pictures are for illustration purposes only, actual machines supplied may differ in appearance and specification.

Sales leaflets containing full product specification available on request and can be found on our website.

# Fluid Storage //

# Water Storage



When looking for a robust, reliable, good quality towable water storage bowser suitable for general water usage on and off site, look no further than our MHM Fluid Storage range.

## Site-Tow Water Bowser 1125

1125L (250 gallon) site-towable water storage bowser



Optional extras



## Site-Tow Water Bowser 2000

2000L (440 gallon) site-towable water storage bowser



Optional extras



## Road-Tow Water Bowser 1125

1125L (250 gallon) road-towable water storage bowser



Optional extras



## Features

1125 litre (250 gallon) and 2000 litre (440 gallon) capacity

Internal anti-surge baffle

22 inch lockable top access cover

Inner sealed and vented lid

Flexible connectivity

Protective galvanised base and durable corrosion free polyethylene inner and outer tank secured by 2 x stainless steel straps

Complete on site-tow or road-tow chassis

## Benefits

Can be safely transported full of water and enough storage for most construction site applications

Additional stability for transport

Secure and simple refill access

Extra protection

Able to suit a variety of applications

Robust, long lasting & ready for work in any environment

Single solid beam axle\*

– **not suitable for UK highway use/**

Single axle, suspension, brakes, mudguards & rear lights†

– **suitable for UK highway use**

\* Site-Tow Water Bowser 1125 & Site-Tow Water Bowser 2000 only  
† Road-Tow Water Bowser 1125 only

## Specification

Model	Capacity (full)	Fluid	Design Approval	Bund Material (thickness)	Inner Tank (thickness)	Dimensions – with Site-Tow Kit				
						L	W	H	Weight (Without Fuel)	Weight (Full of Fuel)
						(mm)				
Site-Tow Water Bowser 1125	1125 L (250 gallon)	Drinking Water (Blue Tank Only) or Wash, Flush & Site Water	UK Standard	7mm	7mm	2550	1500	1400	200 kg	1325 kg
Site-Tow Water Bowser 2000	2000 L (440 gallon)	Drinking Water (Blue Tank Only) or Wash, Flush & Site Water	UK Standard	7mm	7mm	3400	1860	1600	460 kg	2460 kg
Road-Tow Water Bowser 1125	1125 L (250 gallon)	Drinking Water (Blue Tank Only) or Wash, Flush & Site Water	UK Standard	7mm	7mm	2800	1550	1400	260 kg	1385 kg

Sales leaflets containing full product specification available on request and can be found on our website.

Tel 0808 1689099 Email [sales@mhmplant.com](mailto:sales@mhmplant.com)  
[www.mhmplant.com](http://www.mhmplant.com)



All pictures are for illustration purposes only, actual machines supplied may differ in appearance and specification.



# Fluid Storage //

## Water Storage



When looking for a robust, reliable, good quality towable water storage bowser suitable for general water usage on and off site, look no further than our MHM Fluid Storage range.

### Road-Tow Water Bowser 2000-SA

2000L (440 gallon) road-towable water storage bowser



Optional extras



### Road-Tow Water Bowser 2000-TA

2000L (440 gallon) road-towable water storage bowser



Optional extras



## Features

2000 litre (440 gallon) capacity

Internal anti-surge baffle

22 inch lockable top access cover

Inner sealed and vented lid

Flexible connectivity

Protective galvanised base and durable corrosion free polyethylene inner and outer tank secured by 2 x stainless steel straps

Complete on single or twin axle road-tow chassis

## Benefits

Can be safely transported full of water and plenty of storage for most construction site applications

Additional stability for transport

Secure and simple refill access

Extra protection

Able to suit a variety of applications

Robust, long lasting & ready for work in any environment

Single or twin axle, suspension, brakes, mudguards & rear lights\*  
– suitable for UK highway use

Model	Capacity (full)	Fluid	Design Approval	Bund Material (thickness)	Inner Tank (thickness)	Dimensions – with road-tow kit				
						L	W	H	Weight (Without Fuel)	Weight (Full of Fuel)
						(mm)				
Road-Tow Water Bowser 2000-SA	2000 L (440 gallon)	Drinking Water (Blue Tank Only) or Wash, Flush & Site Water	UK Standard	7mm	7mm	3550	1985	1600	600 kg	2600 kg
Road-Tow Water Bowser 2000-TA	2000 L (440 gallon)	Drinking Water (Blue Tank Only) or Wash, Flush & Site Water	UK Standard	7mm	7mm	3540	1800	1550	500 kg	3000 kg

Specification



Tel 0808 1689099 Email [sales@mhmplant.com](mailto:sales@mhmplant.com)  
[www.mhmplant.com](http://www.mhmplant.com)

All pictures are for illustration purposes only, actual machines supplied may differ in appearance and specification.

Sales leaflets containing full product specification available on request and can be found on our website.

# Fluid Storage //

# Water Storage



When looking for a robust, reliable, good quality road-towable pressure washer bowser suitable for general washing and cleaning on and off site, look no further than our MHM Fluid Storage range.

## Road-Tow Pressure Washer Bowser 1125

1125L road-towable pressure washer bowser



Optional extras



## Road-Tow Pressure Washer Bowser 2000

2000L road-towable pressure washer bowser



Optional extras



## TANK Features

1125 litre (250 gallon) and 2000 litre (440 gallon) capacity

- Internal anti-surge baffle
- 22 inch lockable top access cover
- Inner sealed and vented lid
- Protective galvanised base and durable corrosion free polyethylene inner and outer tank secured by 2 x stainless steel straps
- Complete on road-tow chassis

## TANK Benefits

- Can be safely transported full of water and enough storage for most construction site applications
- Additional stability for transport
- Secure and simple refill access
- Extra protection
- Robust, long lasting & ready for work in any environment
- Single axle, suspension, brakes, mudguards & rear lights  
– suitable for UK highway use

## PRESSURE WASHER Features

3000 PSI/ 200 Bar

- Annovi Reverberi water piston pump
- Yanmar electric start diesel engine
- Strong wraparound metal frame and protective front panel cover
- Hand lance, water hose & storage brackets

## PRESSURE WASHER Benefits

- Plenty of pressure for most site washing applications
- Heavy duty and proven reliability
- Power, reliability & robust strength
- Great protection in a rental and construction environment
- For safe and secure storage and transport

Model	Technical							Performance Pressure Washer						Dimensions with Road-Tow Kit				
	Capacity (full)	Engine Fuel	Fluid	Design Approval	Bund Material (thickness)	Inner Tank (thickness)	Pump	Pump Type	Drive	Max Pressure	Max Flow	Hose Length	Noise Level	L	W	H	Dry Weight (No Water)	Wet Weight (Water Full)
Pressure Washer Bowser 1125	1125 L (250 gallon)	Diesel / HVO (HVO = BS EN 15940:2016 Only)	Site Water Only	UK Standard	7mm	7mm	Annovi Reverberi	Triplex Plunger/ RK 15.20 HN	Gearbox	3000 PSI/ 200 Bar	15 Ltr per Min/ 4 Gal per Min	9m	LWA=99 dBa@7m=74	3500 mm	1550 mm	1400 mm	375 kg	1500 kg
Pressure Washer Bowser 2000	2000 L (440 gallon)	Diesel / HVO (HVO = BS EN 15940:2016 Only)	Site Water Only	UK Standard	7mm	7mm	Annovi Reverberi	Triplex Plunger/ RK 15.20 HN	Gearbox	3000 PSI/ 200 Bar	15 Ltr per Min/ 4 Gal per Min	9m	LWA=99 dBa@7m=74	4100 mm	1985 mm	1600 mm	715 kg	2715 kg

Sales leaflets containing full product specification available on request and can be found on our website.

Tel 0808 1689099 Email [sales@mhmplant.com](mailto:sales@mhmplant.com)  
[www.mhmplant.com](http://www.mhmplant.com)



All pictures are for illustration purposes only, actual machines supplied may differ in appearance and specification.

Also available //

# Additional Products



**GROUP**  
The Preferred Supplier



**POWER GENERATION** | **READY TO RENT**



**POWER GENERATION** | **WELFARE CABIN READY**



**POWER GENERATION** | **VANDAL-PROOF CONTAINERS**



**POWER GENERATION** | **SOLAR HYBRID TECHNOLOGY**



**POWER ACCESSORIES**



**SITE LIGHTING**



**WELDING**



## Additional Support

The MHM Group recognise that in the UK and Ireland hire markets managing a modern, up-to-date hire fleet is a key element in maintaining a competitive advantage.

Consequently, MHM have brought together two solutions that will help support all hire firms allowing them to offer the very latest equipment to their customers.

### PART EXCHANGE

MHM resolve to take:

- ✓ Any Equipment
- ✓ Any Model
- ✓ Any Quantity
- ✓ Any Age
- ✓ Any Brand
- ✓ Any Condition

In part exchange for any equipment from the MHM range.



### GUARANTEED BUY BACK

MHM will buy-back any equipment supplied by MHM whether it's:

- ✓ A Runner, fully working
- ✓ A Non-Runner, but complete
- ✓ A Spares or Repairs, incomplete, i.e. missing some parts
- ✓ With fixed price, 1 to 10 year payment facilities

Naturally, there are some terms and conditions attached to these options which will be fully explained before any agreements are entered into.



To find out more about these two unique choices **contact a MHM Group representative.**



Tel 0808 1689099 Email [sales@mhmplant.com](mailto:sales@mhmplant.com)  
[www.mhmplant.com](http://www.mhmplant.com)

All pictures are for illustration purposes only, actual machines supplied may differ in appearance and specification.

Sales leaflets containing full product specification available on request and can be found on our website.



# Your **MHM** Contacts //



**Mat Llewellyn**

Managing Director

**Mob:** +44 (0)808 168 9099

**Email:** info@mhmplant.com



**Brad Ireland**

Group Sales Director – UK, Ireland and Export

**Mob:** +44 (0)808 168 9099

**Email:** info@mhmplant.com



**David Mallon**

National Sales Manager  
– Key Accounts & Innovation

**Mob:** +44 (0)7376 005820

**Email:** davidmallon@mhmplant.com



**Mike Grant**

Business Development Manager  
– Scotland

**Mob:** +44 (0)7961 059064

**Email:** mikegrant@mhmplant.com



**Gregg Taylor**

Business Development Manager  
– Midlands, Wales and South West

**Mob:** +44 (0)7597 670477

**Email:** gregg@mhmplant.com

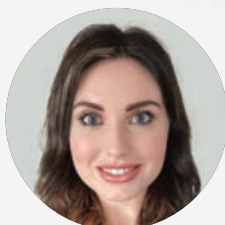


**Richard Burchell**

Business Development Manager  
– Northern England

**Mob:** +44 (0)7376 005822

**Email:** richardburchell@mhmplant.com



**Megan Rand**

Internal Sales Executive

**Mob:** +44 (0)7939 017614

**Email:** sales@mhmplant.com



For more information call **MHM TODAY** on:

**+44 (0)808 168 9099**

Or email: [sales@mhmplant.com](mailto:sales@mhmplant.com) or [rehire@mhmplant.com](mailto:rehire@mhmplant.com)

## **MHM West (Headquarters)**

Unit 3, Aberafan Road, Baglan Industrial Park,  
Port Talbot, SA12 7DJ

## Satellite Depots:

**MHM South East // MHM North West**

**MHM Midlands // MHM Scotland**



[www.mhmplant.com](http://www.mhmplant.com)